

# Remote Monitoring Setting Guide

## Introduction

The **MSI Star Cam** comes with the **My Guard Live** which can let you monitor remotely. However, every user's intranet construction may vary, thus we provide two kinds of possible conditions and setting solutions. Through the step by step instruction, remote monitoring can be a very easy task.

## Hardware Requirements

### For Remote Site:

- I PC
- I **My Guard Live** installed
- I Internet connection (Upload bandwidth more than 64Kb is suggested)

### For Server Site:

- I PC
- I **MSI Star Cam**
- I **My Guard Live** installed
- I Internet connection (Upload bandwidth more than 64Kb is suggested)

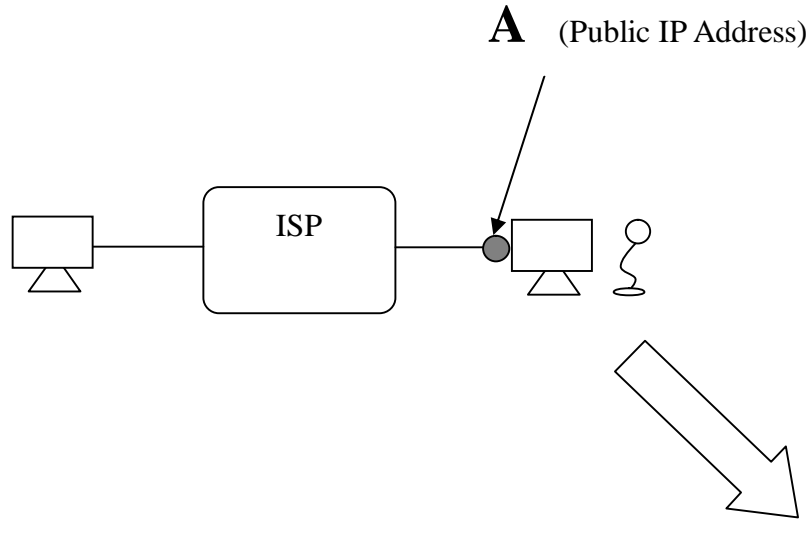
## Note:

- I **My Guard Live** is proprietary to **MSI Star Cam**.
- I For most business and enterprise, they usually have firewall installed to protect virus attack which might also disable the function of the **Star Cam / My Guard Live**. Please consult the expertise for further solution after trying our instructions.

# Condition A:

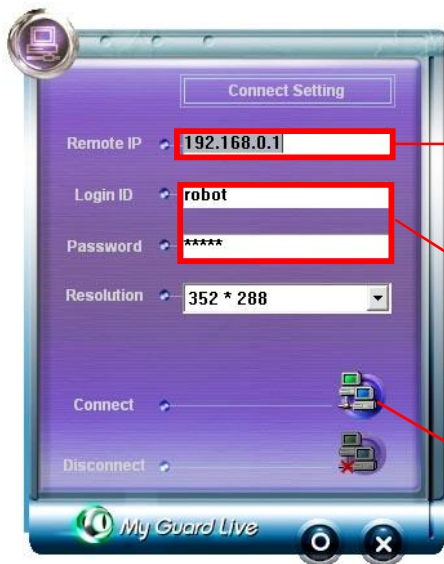
## Remote site:

- | PC
- | My Guard Live installed
- | Internet connection



## Server site:

- | PC
- | MSI Star Cam
- | My Guard Live installed
- | Internet connection



Enter the **A** (Public IP Address) in this field.

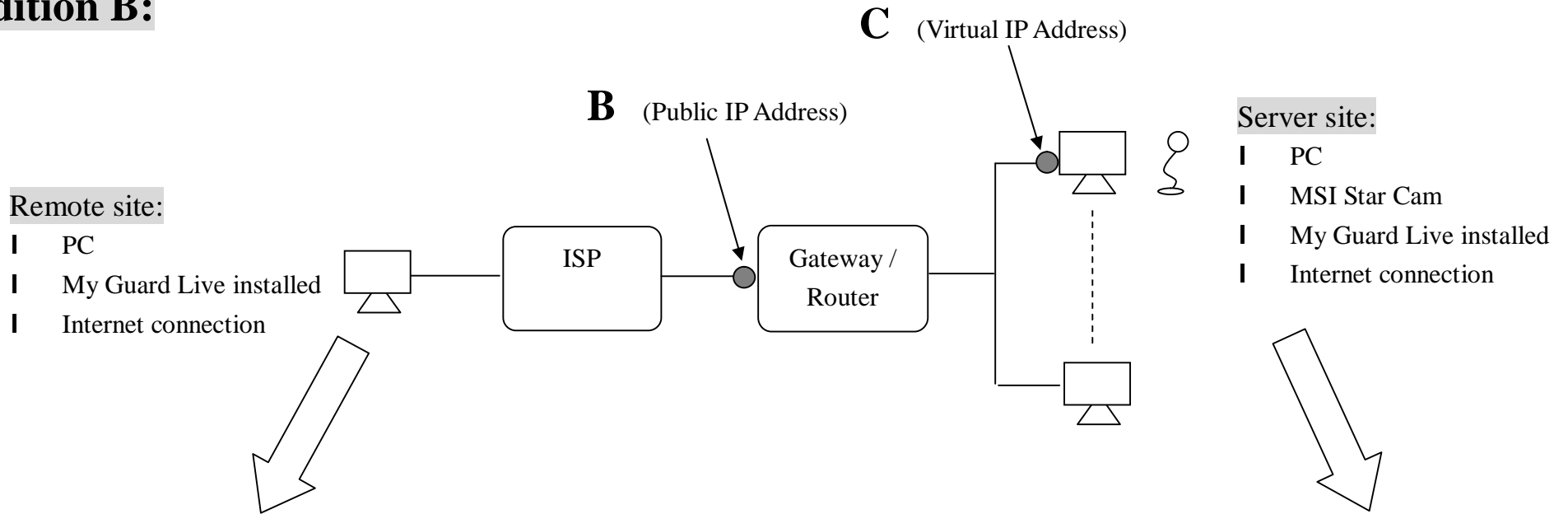
Enter the Login ID and Password which are pre-set in the server site.

Click here to start remote monitoring.



Click here to apply the setting.

## Condition B:



Enter the **B** (Public IP Address) in this field.

Enter the Login ID and Password which are pre-set in the server site.

Click here to start remote monitoring.



Click here to apply the setting.

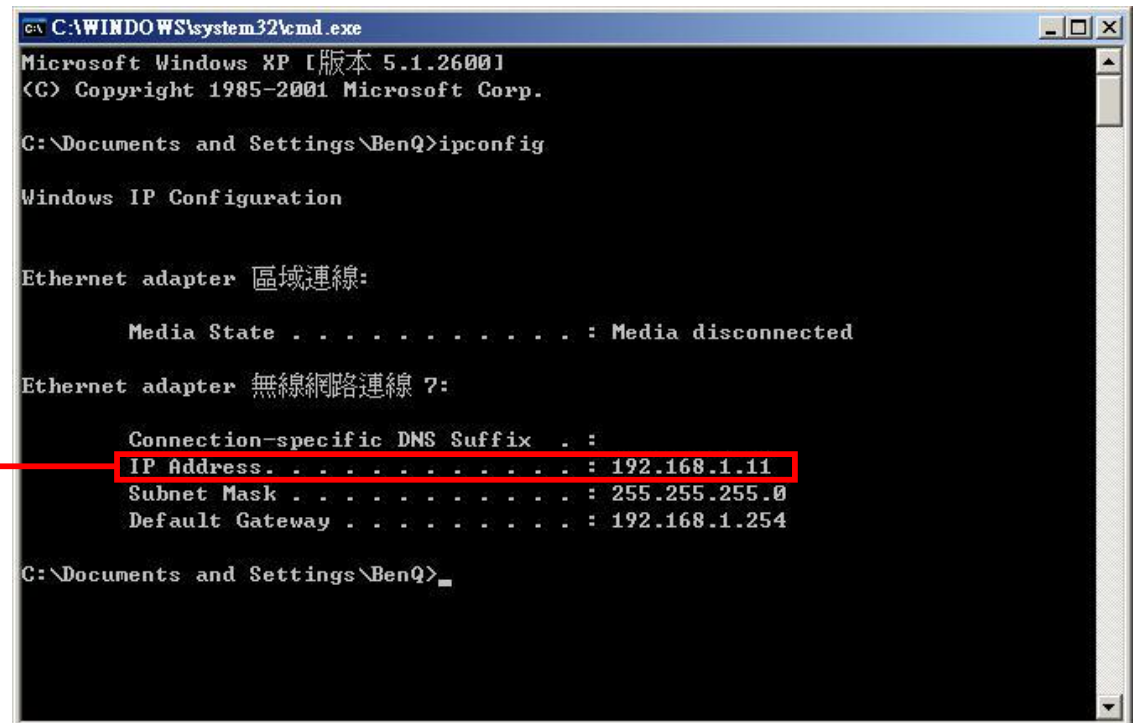
# How to get the IP Address

## How to get the **A** (Public IP Address)

1. Go to **Start** -> **Run**.
2. Type “**cmd**” in the open box and click **OK**.
3. A DOS prompt window appears. Type “**ipconfig/all**” and press [Enter] to display IP information.
4. The item IP Address shows the value.



Public IP Address



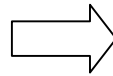
## How to get the **B** (Public IP Address)

**Note:** The following instructions and screen are accessed from the MSI gateway/router application. If you use other brand of gateway/router, please refer to its manual.

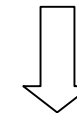
1. Open your web browser.
2. Type the default IP address “**192.168.1.254**” in the Address bar and press [Enter].
3. When the password page appears, type the default password “**admin**” in the Password box and click **LOGIN**.
4. Click **Customized Configuration**.
5. Click **System** and then **System Status**.
6. The item **WAN IP Address** shows the value.



Enter “admin”  
and click LOGIN

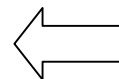


Click here



Internet Settings	
Connection Status	Connected
Connection Type	PPPoE
WAN IP Address	203.67.89.119
Subnet Mask	255.255.255.255
Default Gateway	203.67.89.1
Primary DNS	139.175.55.244
Secondary DNS	139.175.252.16
WAN MAC Address	00-0C-76-20-0D-11
DDNS	Disabled

The IP Address  
of B



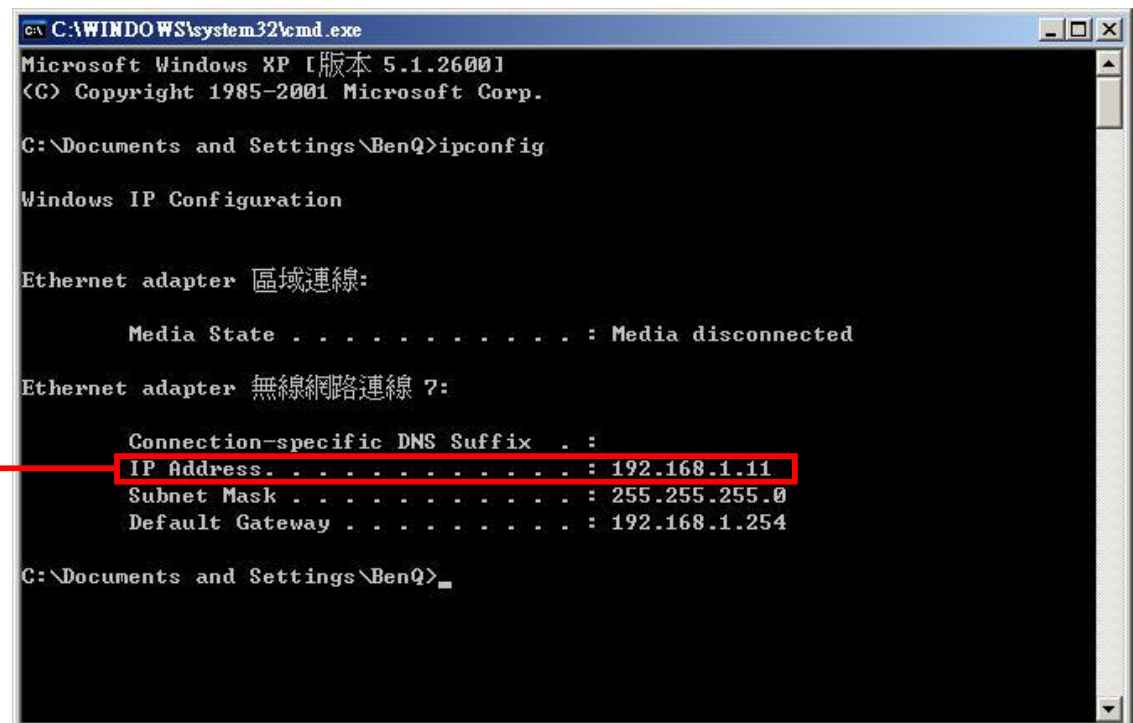
Click here

## How to get the **C** (Virtual IP Address)

1. Go to **Start** -> **Run**.
2. Type “**cmd**” in the open box and click **OK**.
3. A DOS prompt window appears. Type “**ipconfig/all**” and press [Enter] to display IP information.
4. The item IP Address shows the value.



Public IP Address



```
C:\WINDOWS\system32\cmd.exe
Microsoft Windows XP [版本 5.1.2600]
(C) Copyright 1985-2001 Microsoft Corp.

C:\Documents and Settings\BenQ>ipconfig

Windows IP Configuration

Ethernet adapter 區域連線:

    Media State . . . . . : Media disconnected

Ethernet adapter 無線網路連線?:

    Connection-specific DNS Suffix . :
    IP Address. . . . . : 192.168.1.11
    Subnet Mask . . . . . : 255.255.255.0
    Default Gateway . . . . . : 192.168.1.254

C:\Documents and Settings\BenQ>
```

## How to enable the **C** (Virtual IP Address) as the public IP.

1. Open your web browser.
2. Type the default IP address “192.168.1.254” in the Address bar and press [Enter].
3. When the password page appears, type the default password “**admin**” in the Password box and click **LOGIN**.
4. Click **Customized Configuration**.
5. Click **NAT** and then **Virtual Server**.
6. Enter the values in the field.

The screenshot shows the 'Virtual Server' configuration page under the 'NAT' menu. The page title is 'Virtual Server' and it includes a description: 'You can configure the wireless gateway as a virtual server so that remote users accessing services such as Web or FTP at your local site via public IP addresses.' Below the description is a table with the following columns: Service Name, Private IP, Private Port, Type, and Public Port. The table contains one entry with the following values: Service Name: 'A', Private IP: '192.168.1.11', Private Port: '6000', Type: 'Both', and Public Port: '6000'. Below the table is a 'Popular Servers' dropdown menu with the text '-- select one --'. At the bottom of the page are two buttons: '+ Add' and '? Help'. Red boxes highlight the 'Virtual Server' menu item, the 'NAT' menu item, the 'Service Name' field, the 'Private IP' field, the 'Private Port' field, the 'Type' dropdown, the 'Public Port' field, and the '+ Add' button. Red lines connect these elements to text annotations: 'Virtual Server' points to the menu item; 'NAT' points to the menu item; 'Must enter "6000" for its proprietary port' points to the 'Private Port' and 'Public Port' fields; 'Name a title for this virtual server' points to the 'Service Name' field; 'Click "+Add" if all values are filled' points to the '+ Add' button; and 'Select "Both"' points to the 'Type' dropdown.

**Virtual Server**

**NAT**

Must enter “6000” for its proprietary port

Service Name: A, Private IP: 192.168.1.11, Private Port: 6000, Type: Both, Public Port: 6000

Popular Servers: -- select one --

+ Add ? Help

Name a title for this virtual server

Click “+Add” if all values are filled

Select “Both”